



Continental

Specifications

	3 TOON	
	250	270
Length (LOA)	27'	29'
Horsepower	400 HP	400 HP
Fuel Tank	77 gal	77 gal
Persons Capacity	13	15
Maximum Persons Weight	1,785 lbs	2,165 lbs
Maximum Persons, Motor & Gear Weight	2,810 lbs	3,190 lbs
Boat Weight	4,347 lbs	4,637 lbs

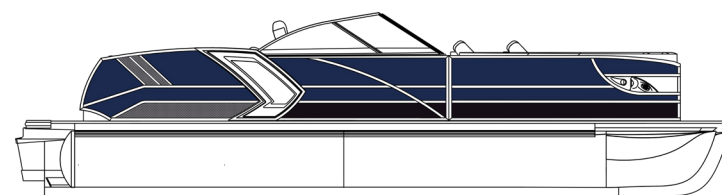
For a full list of specifications, visit crestpontoonboats.com.
 Not all color combinations may be available. Colors shown are for representative purposes only. See your Crest dealer for details.

PRIMARY & ACCENT PANEL COLORS

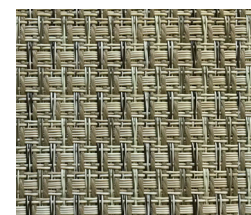
- Black Metallic
- White Metallic
- Caribou Metallic
- Sage Green Metallic
- Steel Gray Metallic
- Navy Metallic
- Steel Blue Metallic

COLOR PLACEMENT

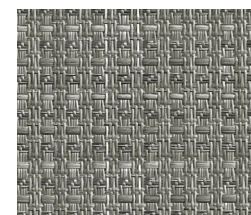
Shown: Navy Metallic & Black Metallic



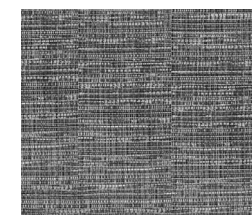
Flooring Options



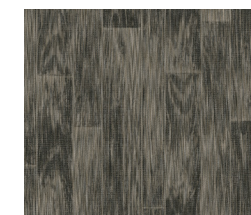
SeaGrass
Tan Blended Tweed



SeaGrass
Gray Blended Tweed



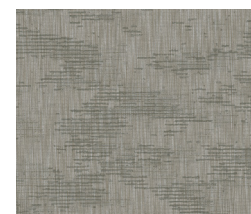
SeaGrass
Fusion Gray
Blended Tweed



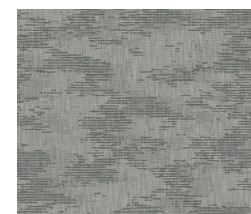
SeaGrass
Tan Woven Lakeport
Blended Tweed



SeaGrass
Gray Woven Lakeport
Blended Tweed



SeaGrass Premium
Tan Blended Tweed



SeaGrass Premium
Gray Blended Tweed



Poly Vinyl
Rustic Weathered Gray



Poly Vinyl
Cabin Life

Upholstery Options



Tan



Gray

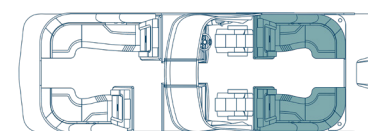


Navy Cool Touch

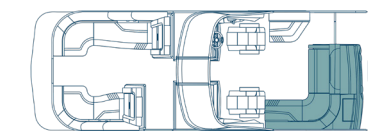


Beach

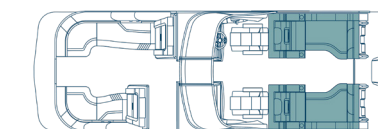
Floor Plan Options



SLC | Portside Captain's Chair
250 | 25'



SLS | Swing Back Mini L
250 | 25'



SLRC | Rear Chaise
250 | 25'

