



Continental NX

Specifications

	3 TOON	
	270 SINGLE ENGINE	270 TWIN ENGINE
Length (LOA)	29'	29'
Horsepower	400 HP	800 HP
Fuel Tank	77 gal	77 gal
Persons Capacity	15	14
Maximum Persons Weight	2,165 lbs	1,175 lbs
Maximum Persons, Motor & Gear Weight	3,190 lbs	3,305 lbs
Boat Weight	4,637 lbs	4,944 lbs

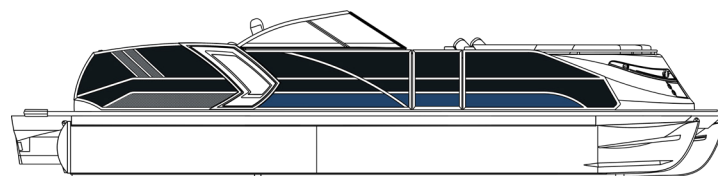
For a full list of specifications, visit crestpontoonboats.com.
 Not all color combinations may be available. Colors shown are for representative purposes only. See your Crest dealer for details.

PRIMARY & ACCENT PANEL COLORS

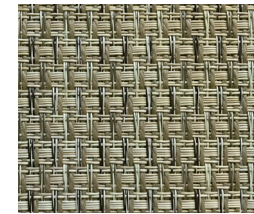
- Black Metallic
- White Metallic
- Caribou Metallic
- Sage Green Metallic
- Steel Gray Metallic
- Navy Metallic
- Steel Blue Metallic

COLOR PLACEMENT

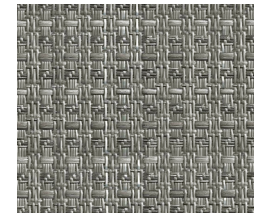
Shown: Black Metallic & Navy Metallic



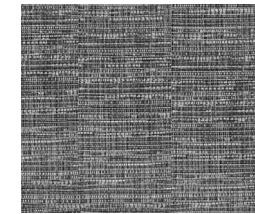
Flooring Options



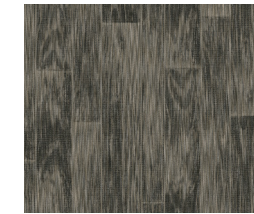
SeaGrass
Tan Blended Tweed



SeaGrass
Gray Blended Tweed



SeaGrass
Fusion Gray
Blended Tweed



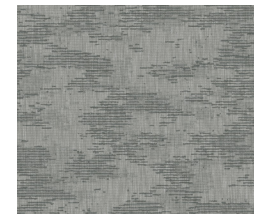
SeaGrass
Tan Woven Lakeport
Blended Tweed



SeaGrass
Gray Woven Lakeport
Blended Tweed



SeaGrass Premium
Tan Blended Tweed



SeaGrass Premium
Gray Blended Tweed



Poly Vinyl
Rustic Weathered Gray



Poly Vinyl
Cabin Life

Upholstery Options



Tan



Gray

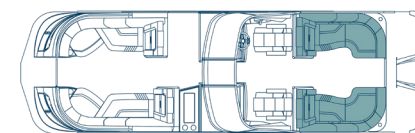


Navy Cool Touch

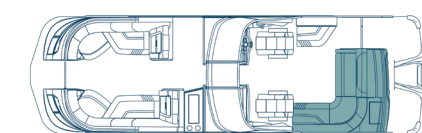


Beach

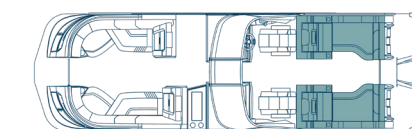
Floor Plan Options



SLC | Portside Captain's Chair*
270 | 27'



SLS | Swing Back Mini L*
270 | 27'



SLRC | Rear Chaise*
270 | 27'

*All floor plans also available with twin engine option

